



FOR IMMEDIATE RELEASE

## Curatorial Opportunity Program | 2018-19 Selections

(Newtonville, MA) The New Art Center is excited to announce the 2018-19 Curatorial Opportunity Program selections. The Curatorial Opportunity Program (COP) is an open-call curatorial platform that investigates contemporary culture through the visual arts. It makes possible diverse curatorial visions in a non-profit and alternative exhibition space. Curators of selected group exhibitions receive a \$1,000 stipend and administrative, promotional and technical support. Unique to the region, the COP is a collaborative vehicle through which curators and artists present thoughtful and innovative contemporary group exhibitions.



Rachel Eng, *Rehydration*, 2017, unfired clay, watering system



Vered Snear, *Life Hack #1*, 2016, bronze and metal

### Expanse

September 14 – October 27, 2018

Opening Reception: September 14, 6-8PM

**Curated by:** Rachel Eng

**Featuring:** Rachel Eng, Shoshannah White, and Ashley Eliza Williams

Through painting, photography, and sculpture, this exhibition explores the physical and psychological relationships between humans and our ever changing climate.

### Latent Drives

February 15 – March 30, 2019

Opening Reception: February 15, 6-8PM

**Curated by:** William Lee & Vered Snear

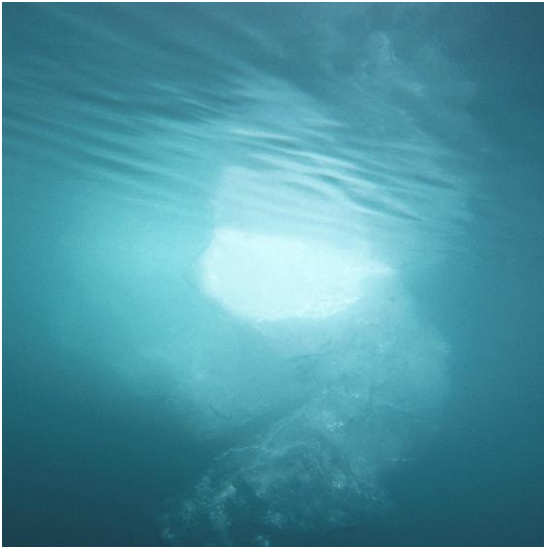
**Featuring:** Ziv Zeev Cohen, William Lee, Vered Snear, and Jasmin Vardi

In this exhibition, artists explore the ways in which hacking culture has pervaded everyday life, creating a world in which even the contours of humanity are changeable.

## From the Curator of *Expanse*

"The more clearly we can focus our attention on the wonders and realities of the universe about us, the less taste we shall have for destruction."

—Rachel Carson (Marine Biologist)



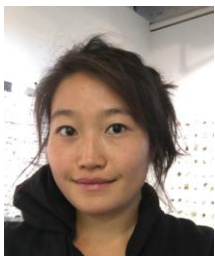
(left) Shoshannah White, *Svalbard, Iceberg #1*, 2015-2017, photographic wheat pasted mural print; (right) Ashley Eliza Williams, *Inner Balance of Things*, 2014, oil on panel

The artworks in *Expanse* draws on imagery from nature, to investigate the curiosities we have as humans, living in an ever-changing world. Various forms of life continue to be discovered all over our planet. As our climate shifts, ecosystems on land and in the water are affected. Our human efficiency and desire for growth lead to the development and inhabitation of wild spaces, pushing indigenous plants and organisms out. How do we choose to perceive these changes and how do these physical changes in our environments affect how we think?

The artists in this exhibition have a shared interest in the diversity and wonder of our geography. Through painting, photography, and sculpture, these works are devoid of humans yet capture the emotions we have, through atmosphere, light, and form. It is collection of specimens and indiscernible moments in time.

The interrelationship between asserting control on our environment and the wildness of our planet and weather is complex. What impact do we have on different ecologies and how do we navigate our relationships with them? The works in this exhibition present the intricacies and beauty present in the relationships humans have, both physically and psychologically, with our environments.

## About the Curator



**Rachel Eng** grew up exploring the deciduous forests of Rochester, NY, and her fascination with the natural world continues today. Although trained in ceramics, she utilizes mixed media as well as drawing in her projects. Her work often employs repetitive patterns and the use of multiple elements to create complex visual and textural experiences. In 2017 she was selected as an *NCECA Emerging Artist* and awarded a residency at *NES* in Iceland. Eng received her B.F.A. from Pennsylvania State University and her M.F.A. from the University of Colorado at Boulder. She is currently an Assistant Professor of Art at Dickinson College in Carlisle, PA.

## From the Curators of *Latent Drives*



(left) William Lee, *Glass Lasts*, 2016, LCD screens, computer, sandbags, electronic epoxy, clay, 2-channel video in color, looped, no sound, multiple durations; (right) Jasmin Vardi, *Hyper territory*, still from video, 2017, 1-channel video projection.

*Latent Drives* examines how hacking generates methodologies for conceptualizing, understanding, and interacting with the allegedly fixed and complex systems that constitute our lives, such as race and culture, by rendering them already breakable.

The term “hacking” itself has extended beyond typical connotations of invading and manipulating computer systems, and has spilled over into everyday life. The prevalence of “life hack” articles, the rise of augmented reality, and of technological implants all point to an existence in which the contours of humanity are constantly mutable.

Hacking assumes both the legibility and existence of a certain system, and that the hacker has intimate knowledge of said system, as well as the necessary tools and protocols to intervene, disrupt, and change its logic. Performing a hack promises a degree of agency in understanding and manipulating the desired object.

## About the Curators



**William Lee** is an artist who works with sculpture, video, and game-design. His practice draws upon the history of videogames and slow cinema to formulate a zero-degree aesthetic, the minimal limit of consciously registered experience.

He obtained his MFA at Parsons School of Design and is currently subsisting in New York City. Exhibitions and publications include: *unbag Issue 2: End*; *White Dust Billows Under Black Sun*, Fukiage Museum, Okayama; and *I can because you do*, Participant Inc, New York, NY.



**Vered Snear** is a research-based artist working predominantly in video, installation, photography, and sculpture. Recent group exhibitions include: *Superpositions*, 21st

Biennale of Sydney (in collaboration with Brook Andrew), Museum of Contemporary Art, Sydney (2018); *Bronx Calling: The Fourth AIM Biennial*, The Bronx Museum of the Arts, New York (2017); *I can because you do*, Participant Inc, New York (2016); *Universum*, The International Photography Festival, Jaffa, Israel (2016). Snear was a NYC Art + Law Fellow (2016) and part of the AIM Program, Bronx Museum (2017). She has undertaken residencies at Banff Centre, Canada (2016), MASS MoCA (2018), Vermont Studio Center (2018), and UNSW Art + Design, Australia (2018).





(left to right) Installation shot from *The Newest Romantics*, curated by Jamilee Lacy, Spring 2017; Desiree Moore, "Over and Under and Through" in *Color:Coded*, curated by Michael Covello Odalla & Alison Terndrup, Fall 2017

## About the Curatorial Opportunity Program (COP)

Submission Deadline: June 5, 2018

The New Art Center (NAC) is currently accepting curatorial proposals for 5 to 6-week group exhibitions to be hosted from September 2019 – May 2020 in their 2,500 square foot gallery. The gallery occupies the sanctuary of a former church, with 25-foot vaulted ceilings, substantial natural light, and several movable wall panels. Proposals must include works by two or more artists as well as at least one public presentation with an educational component.

Interested parties are encouraged to attend a hands-on workshop & information session at the New Art Center. COP workshops feature presentations by curators about their projects and approaches to curating contemporary art, and invite participants to engage in dialogue about curatorial ideas while learning more about the Curatorial Opportunity Program.

### COP Workshop with Jamin An & Jen Mergel

At New Art Center  
April 25, 7-9PM, \$10

Jamin An, Curatorial Fellow at the MIT List Visual Arts Center & Jen Mergel, Vice President, Programming at the Association of Art Museum Curators will speak about the definitions of a curator and issues of cultural equity. New Art Center staff will be on hand to answer questions about the COP program and application.

---

**The New Art Center**, a nonprofit organization, is a community art education space which offers everyone, at all levels of ability, exceptional opportunities to make, exhibit, view, think about and talk about art. We serve over 2,500 students annually in hundreds of classes and workshops taught by some of the region's most esteemed art educators. Our gallery, one of the few mid-sized nonprofit exhibition spaces in New England, attracts over 5,000 visitors annually.

**Address:** 61 Washington Park, Newtonville, MA 02460

**Contact:** Exhibitions Coordinator, [leah@newartcenter.org](mailto:leah@newartcenter.org)

**Gallery Hours:** Tuesday–Friday, 1PM–6PM, Saturdays, 11AM–4PM, and by appointment.

Contact: Leah Hamilton French | Exhibitions Coordinator | [leah@newartcenter.org](mailto:leah@newartcenter.org)  
61 Washington Park | Newtonville MA | 02460 | [www.NewArtCenter.org](http://www.NewArtCenter.org) | 617.964.3424