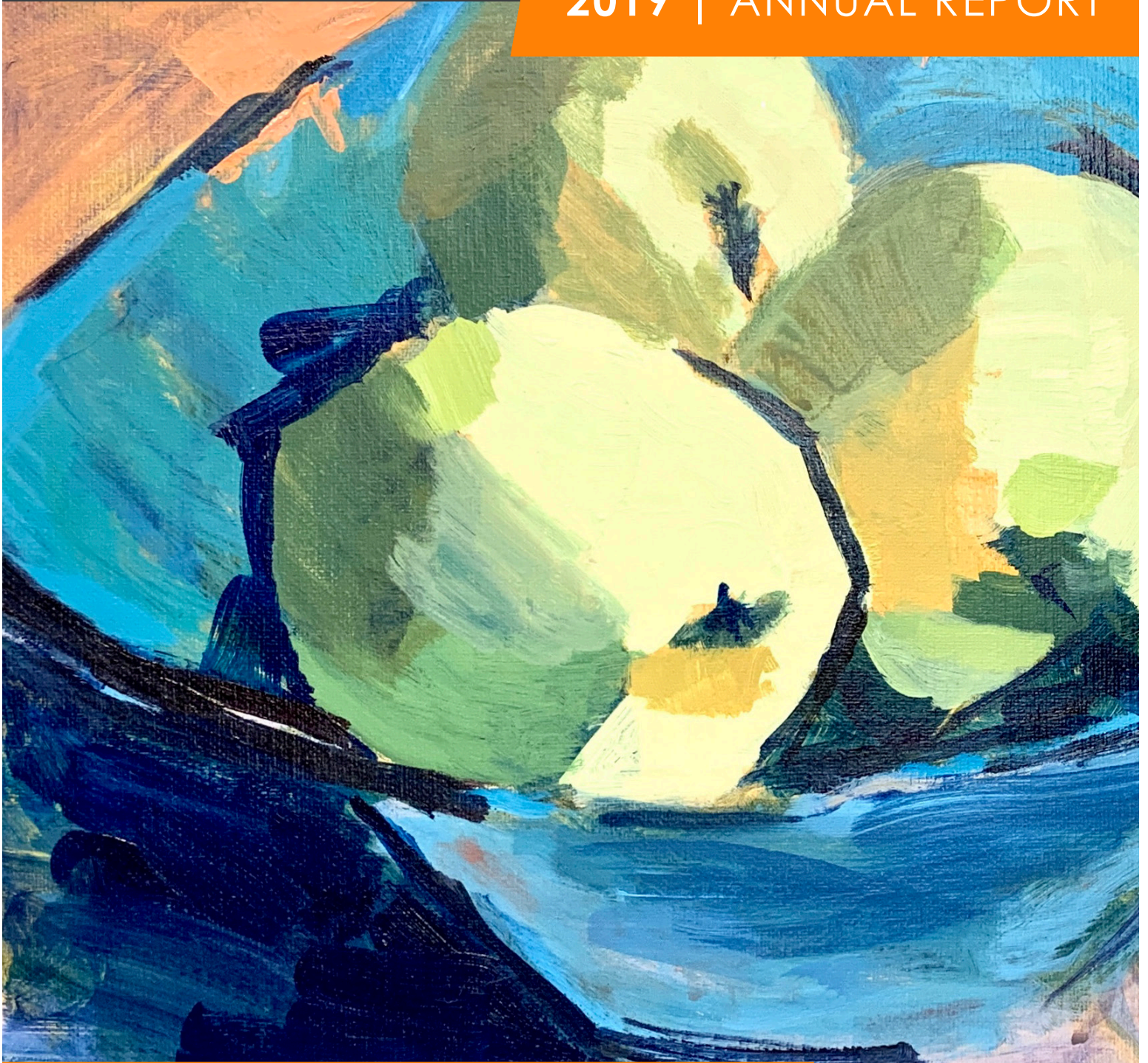
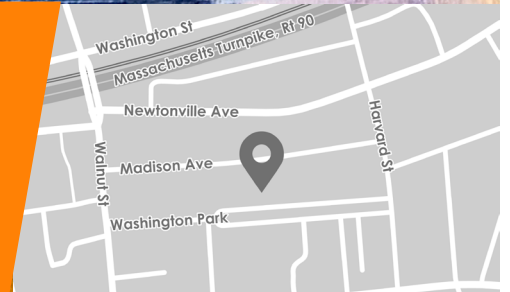


new art center in newton

2019 | ANNUAL REPORT



61 Washington Park // Newton, MA 02460
617.964.3424 // www.newartcenter.org



WELCOME

■	Welcome	2
■	Message from ED & Board President	3
■	2019 Highlights	5
■	Classes & Workshops	6
■	Exhibitions	7
■	Community Outreach	8
■	Donors & Sponsors	9
■	Financials	10

OUR MISSION

We are a non-profit community art education space which offers everyone, at all levels of ability, exceptional opportunities to make, exhibit, view, think about and talk about art.

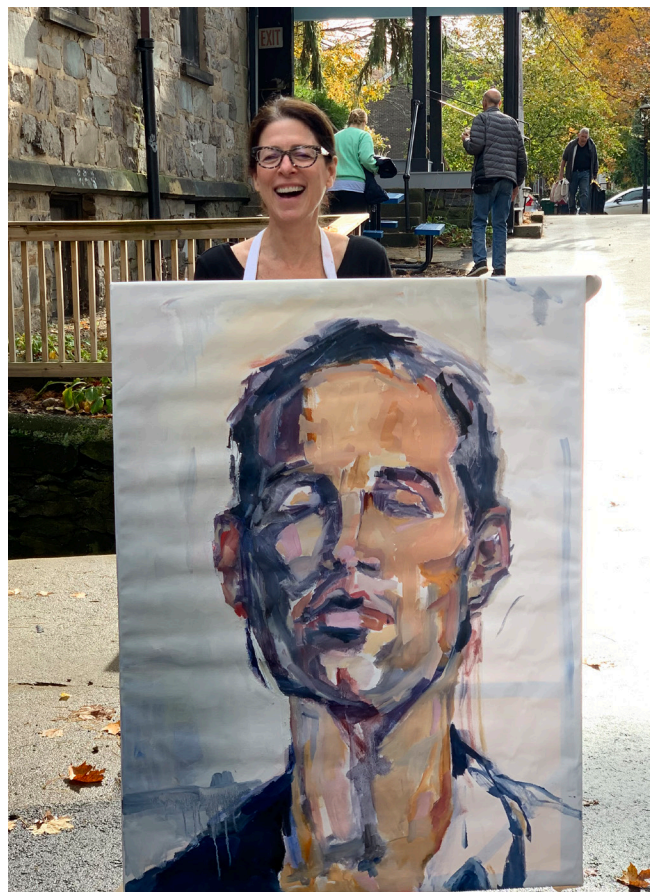
OUR VALUES

The New Art Center will become a vibrant model of a community art center, lowering barriers to participation in the arts and integrating the experience of art into the life of the community. Your support helps us to realize this vision and keeps our community vibrant and creative.

OUR VISION

The New Art Center is based on the belief that the practice of looking at, thinking about and making art helps human beings solve problems, learn from their environment, build durable communities and live meaningful lives. We work towards a future in which all people can incorporate the experience of art into their daily lives.

FRONT COVER: by Mindy Margulies



*Portrait Painting Class with Jeffrey Ellse
Student Caryl Hull Leavitt*



*Youth Summer Program, GR 1 - 6
Ceramics, Week 1*

A MESSAGE FROM THE DIRECTOR & PRESIDENT

Thank you for your interest in the New Art Center! We are pleased to share our strategic and programmatic results from 2019, which was a strong year for the New Art Center.

Under the leadership of Kim Spencer, Board of Governors President 2017 – 2019, New Art refocused programmatic goals for 2019. By repurposing our Main Gallery as classroom space, our enrollments grew by 15% and revenue by 12%. We added exciting new opportunities, including Nights Out @ New Art, a series of Friday evening programs with a social aspect, as well as pre-college summer programming for Teens, including Clothed Figure and Portrait Drawing.

We expanded current programming with favorite New Art Center teachers – such as ceramics workshops with Sayaka Rawizza, and additional 2-d classes with Zhanna Cantor. We also added several new teachers to our strong faculty base, including Ron Krouk (drawing and painting), Santiago Hernandez (Adult Abstract Painting, Teen Drawing and Mixed Media), Jennifer Lamontagne (Embroidery), Martha Wakefield (Color/Painting Workshop), and visiting artist Marguerite Gignoux (Textile weekend workshop).

Our enrollment highlights include some of the highest enrollment in our 44 year history!

- Winter 2019, 605 enrolled
- Spring 2019, 555 enrolled
- Summer 2019: 780 students. Record breaking!
- Fall 2019, 755 students enrolled. Record breaking!

And as a way to reaffirm our mission to offer everyone, at all levels of ability, exceptional opportunities to make, exhibit, view, think about and talk about art, we also increased our focus on free community outreach events. Thanks to support from The Presti Group, the Newton Cultural Council and the Village Bank, we now offer a series of free Family Art Drop-in Sundays, for parents and children to create art together. These events have been very



*Painting Oil & Acrylic Class with Zhanna Cantor
Fall, 2019 Class Discussion*



*Personal Geometry Workshop
with Marguerite Gignoux, Fall 2019*

A MESSAGE FROM THE DIRECTOR & PRESIDENT

popular with families, and serve to make arts accessible to all learners!

We also continue to offer several community outreach classes which are funded through our scholarship program. Our private art therapy class for women and families healing from domestic violence meets weekly, as does our ceramics class for the Clearway School, a local private school for students with language-based learning disabilities. We also offer free outreach classes for young adults who are developmentally delayed; these classes meet on Sundays at Brigham House in Newton and are led by an educator who is also a MSW. New Art also has a robust scholarship program that directly supports approximately 15% of our students.

By the numbers, in 2019, we fulfilled:

- A combined 23 weeks of scholarship support for students of our summer and vacation programs for children ages K – 12.
- 25 requests for full and partial scholarship support for adults and children as well as materials and art supplies for children with demonstrated financial need.
- Supported approximately 30 classes for The Second Step, with 4 – 10 students in each class – so close to 300 "touches" for women who have been impacted by domestic violence
- Approximately 17 classes for the Clearway School, for students with learning disabilities
- Approximately 30 classes at Brigham House in Newton, for young adults with developmental disabilities, with 10 students at each class

Additionally, we signed a lease for 2,000 square feet of satellite classroom space, rent free, in the new building called Trio Newton. Slated to open in the summer of 2020, the new space will add 25% more classroom space, allowing us to add additional programs for students.

BOARD MEMBERS

Ty Furman (President)

Marcia Neiberg (Vice President)

Kim Spencer (Assoc. Vice President)

Jeff Greenstein (Treasurer)

Noah Berger

Norman Finn

Robin Hicks

Michael Kaufman

Jennifer London

Dewey Nichols

Joelle Tomb

Paula Witkin



Handbuilding Techniques: Festive Centerpiece with Sayaka Rawizza

A MESSAGE FROM THE DIRECTOR & PRESIDENT

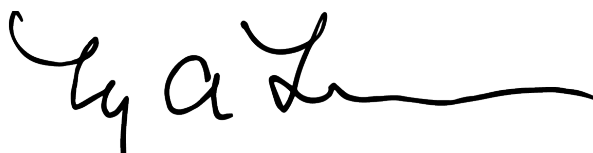
On a sad note, we lost one of New Art's greatest supporters, Andrew Dibner, on July 6, 2019. Andy Dibner's impact and legacy here at the New Art Center cannot be underestimated. Andy was an avid student and took more than 20 classes ranging from ceramics, to printmaking to painting. Andy was also actively involved as a long-time member of the New Art Center's Board of Governors, serving on several different committees including the exhibitions committee and the building committee. As a final gift, Andy's bequeathed New Art a restricted grant for our IT platform. We are looking forward to updating our database later in 2020, and a new website will be rolled out in the Spring of 2020. While this type of support may seem unglamorous, this was Andy's style, and he did not shy away for supporting the operating framework that allows us to meet our mission. We will miss Andy, and we are thankful for his legacy.

The New Art Center also gained new leadership in 2019. Emily O'Neil, a long-time Newton resident with deep local connections and a track record of success as a nonprofit executive, was appointed Executive Director in April 2019. Dr. Ty Furman took over as President of the Board of Governors in July 2019.

Thank you for your interest in New Art!



Emily O'Neil
Executive Director



Ty Furman
Board President



Youth Summer Program,
GR 1 - 6, 3D, Week 4



Youth Summer Program,
GR 7 - 12, Drawing, Week 5



Stained Glass Class with
Michel L'Huillier, Winter 2019

ADULT, TEEN, & CHILDREN

CLASSES & WORKSHOPS

ADULT & YOUTH CLASSES

Throughout the year we offer children, teen, and adult in-depth, comprehensive art classes taught by experienced local artists. Mediums taught include drawing, painting, ceramics, encaustic painting, fiber arts, and more for all skill and experience levels.

ADULT WORKSHOPS

Our workshops offer adults short, focused art lessons taught by our faculty and visiting artists that allow you to try a medium, technique, or subject matter in 1 to 4 meetings.

SUMMER & VACATION YOUTH PROGRAMS

With MLK Day & Veterans Day for grades K-5, February & April Programs for grades K-12, and Summer Programs for grades 1 - 12, our students get to explore a variety of mediums and techniques during their school and summer vacations!

***NEW IN 2019* FIGURE & PORTRAIT DRAWING FOR TEENS**

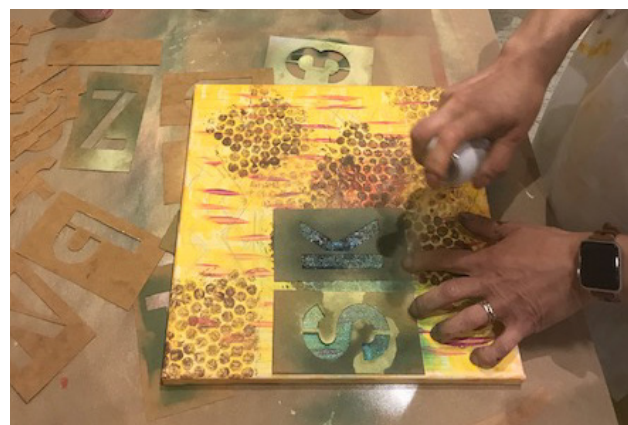
During our 2019 Summer Vacation Program we offered drawing sessions for our teens grades 7 - 12 to work with a live clothed model.

***NEW IN 2019* NIGHTS OUT @ NEW ART**

New this year, we introduced our one session, "paint and sip" style Friday evening workshops "Art with a Twist" and "Friday Figure Draw" which have been a huge success.



*Youth Summer Program, GR 1 - 6
2D, Week 5*



*Nights Out @ New Art,
Art with a Twist*



*Youth Summer Program, GR 7 - 12
Drawing, Week 3*

EXHIBITIONS

HOLZWASSER GALLERY

The Holzwasser Gallery was created in 1991 due to a generous donation from Mary Holzwasser (1912-2003), an artist, student, New Art Center board member, and lifelong patron of the arts. This year the gallery had 5 exhibitions and showcased 65+ local artists.

SATELLITE GALLERIES

The New Art Center is pleased to display work of faculty and students at the offices of Freedman Healthcare LLC, the Newton Highlands and Newtonville branches of Brookline Bank, and Village Bank in Newton Center.

***NEW IN 2019* BEACON GALLERY POP-UP**

This past December, 2019, New Art Center had a pop-up exhibition featuring faculty and staff, generously hosted by the Beacon Gallery in Boston, MA. Many of the artists sold pieces and saw many visitors through the gallery space.



"Liquid Portraits: An Installation created by Zhanna Cantor in collaboration with Carey McKinley" Opening Reception and Performance



Child's Play, by Robin Hicks, work displayed in "Vantages & Vistas: Students of Michael Wilson"

ADULT, TEEN, & CHILDREN

COMMUNITY OUTREACH

CLEARWAY SCHOOL

In conjunction with Clearway School, we host and financially support a ceramics class for young adults who are developmentally delayed who met 30 times in 2019.

THE SECOND STEP

We offer a weekly private art therapy class for women and families healing from domestic violence with The Second Step, which met about 30 times in 2019.

BRIGHAM HOUSE

In 2019 we supported approximately 30 meetings at Brigham House in Newton, for young adults with developmental disabilities, with 10 students attending each class to make art.



*Newtonville Village Day 2019,
Free Clay Making*



Free Family Day, November 2019

NEW IN 2019

NEWTONVILLE VILLAGE DAY

This summer at Newton Village Day we lead free “clay creation” making where children and adults could stop by and build a pinch pot or any other creation!

NEW IN 2019

FREE FAMILY ART DROP-IN

New in Fall 2019, our Free Family Art Drop-In days saw over 200+ attendees where children with their parents, grandparents, or guardians explored 2 art-maker spaces with different projects each time!



DONORS & SPONSORS

YOUR GIFTS MAKE IT HAPPEN! DONATE AT WWW.NEWARTCENTER.ORG

As a non-profit, tax-exempt, 501(c)(3) organization, New Art thrives thanks to you! Your generous contributions directly impact and enable high-quality and innovative art education, exhibition, scholarship, and outreach programs.

Supporters who donate an annual gift of \$500 or more are recognized as Friends of the New Art Center. We are deeply grateful to the Friends of the New Art Center for their pledges and gifts made between January 1, 2019 and December 31, 2019.

DIRECTORS (\$20,000+) - The Andrew & Jean Dibner "Community Connection" Project

PATRONS (\$10,000+) - Sue Rosenthal & Jo Ann Cohn • Sandy Berbeco & David Coen • Karen & Nate Levy • Bev Myers

SPONSORS (\$5,000+) - Anonymous • Robin & Brian Hicks • Liz Hiser & Charlie Hoban

LEADERS (\$2,500+) - The Edgerley Family Foundation • Denise Matejic • The Presti Group • Liang & Bernard Schweizer • Carol Stoll Baker • Village Bank

FELLOWS (\$1,000+) - Jessica Straus & David Berson • Cambridge Savings Bank • Cynthia & George Cole • Norman Finn • Dewey Nichols & David Fuller • Christopher Yens & Temple Gill • Kim Spencer & Greg Gomez • Andres Saldaña & Elizabeth Miller • Marcia Neiberg • Newton Cultural Council • Michael & Patty Rosenblatt • Cindy & Ely Sachs • Karen Weinhaus • Paula & Mark Witkin • Janet & Ron Zwanziger

FRIENDS OF NEW ART CENTER (\$500+) - Nelina & Clifford Backman • Beverly & Robert Bernson • DS Graphics • Sunwoo Kahng & Peter Boberg • Ingrid Scheibler & John Coates • Kim Comart • Lynn Dennis • Sarah & Jeff Ecker • Ty Furman • Galenus Foundation • Gloria & Lee Gavis • Gail Hansen • Emily O'Neil & Doug Hatfield • Diana Bailey & Bob Jaffe • Michael Kaufman • Noah Berger & Indu Mani • Mark Development • Anne Esbenshade & Michael Miele • Lindsay & Chris Pike • Cheryl & Jeff Sacks • Carol Smith • Conchita Prada Strange & Donald Strange • Katrina & Jeffrey Yolen



NEW ART @ A GLANCE

We are a non-profit community art education space which offers everyone, at all levels of ability, exceptional opportunities to make, exhibit, view, think about and talk about art.

PROGRAMS



123
Zipcodes Served

61%
Students From Newton

2,600+
Annual Enrollments

1,500+
Students per Year

43% 38% 19%
Adults, Children, Teens

285
Classes & Workshops

62
Faculty & Staff

13,665
Students since 1990
in FileMaker

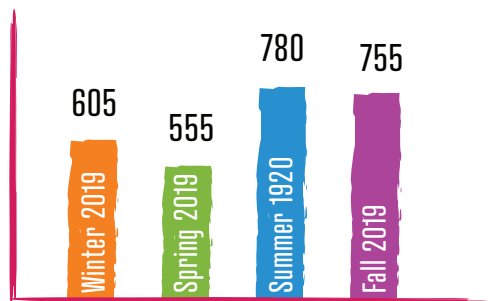
700+
First Time New Art
Students

592
Students Have Taken
10+ Classes in 5 Years

STUDENTS BY MUNICIPALITY



ENROLLMENTS



FINANCIALS



EXPENSES \$1,185,390

Payroll, Taxes, Benefits, 69.4%, \$822,951
General, Admin, Fundraising, 14.6%, \$173,360
Facility, 10.0%, \$118,499
Marketing, 3.2%, \$37,852
Utilities, 2.0%, \$23,150
Exhibitions, 0.7%, \$8,254
Misc, 0.1%, \$708
Rental, >0.1%, \$615



INCOME \$1,241,752

Classes, Workshops, Programs, 78.3%, \$972,629
Annual Fund & Board Contributions, 10.7%, \$132,693
Major & Restricted Gifts, 7.4%, \$91,310
Corp. Sponsors, Foundations, Grants, 2.5%, \$31,640
Special Events & Credit Card Fees, 0.5%, \$6,693
Exhibitions, 0.5%, \$5,975
Event Rentals, 0.1%, \$675
Misc, > 0.1%, \$137

OUTREACH

\$19,000+
Yearly Student
Scholarships Given

77+
Annual Community
Outreach Classes

200+
Participants in
Free Family Day

175
Donor Supporters &
Corporate Sponsors

EXHIBITIONS

5 / YEAR
Free Public
Exhibitions & Openings

67
Local Artists
Exhibited

FINANCIALS

These financials represent revenue and expenses from January 1, 2019 to December 31, 2019.

REVENUE, OPERATING FUND (Unaudited)

EARNED INCOME	
Adult Art Classes & Workshops	\$476,968
Child & Teen Vacation Programs	\$324,824
Child & Teen Art Classes & Workshops	\$170,837
Exhibition	\$5,975
Event Rentals	\$675
Misc	\$81
CONTRIBUTED INCOME	
Annual Fund	\$121,959
Restricted Gifts/Scholarship	\$61,310
Major Gifts	\$30,000
Grants and Foundations	\$17,340
Corporate Support	\$14,300
Board Contributions	\$10,734
Special Events	\$5,400
Credit Card Donation Fees	\$1,293
Misc	\$56
TOTAL INCOME	\$1,241,752

EXPENSES

Education Expenses: Faculty and Model Payroll and Taxes	\$414,107
Personnel Expenses: Staff Wages, Payroll Taxes and Benefits	\$408,844
General & Administrative & Fundraising	\$173,361
Facility	\$118,499
Marketing	\$37,852
Utilities	\$23,150
Exhibitions	\$8,254
Misc	\$708
Rental Expenses	\$615
TOTAL INCOME	\$1,185,390



new art center in newton

We are a non-profit community art education space which offers everyone, at all levels of ability, exceptional opportunities to make, exhibit, view, think about and talk about art.

